

# Release Notes for rootstrust, Version 2.0, (Build 402.2)

November 20, 2020

## General

This build contains all enhancements and fixes since the release of build 401. Some of those builds were special builds for individual users who were experiencing problems or testing new features that they had requested.

## Enhancements

- Enhanced Windows installer for rootstrust.** For several years the installer for Windows has installed rootstrust at X:\Users\{your user name}\AppData\Roaming, where X is the letter of the system drive (normally C), for both normal users and users with admin privileges. This was done since only admin users are permitted to install in the Program Files directory. The installer now senses the user type and sets the default install directory to X:\Users\{your user name}\AppData\Roaming\rootsTrust for the normal users and X:\Program Files\rootsTrust for admin users. The user still has the option of changing the install directory, but now the installer disallows the selection of the root directory of the system drive, the Windows directory or a path that does not end in \rootsTrust. In addition, non-admin users may not install under X:\Program Files or X:\Program Files (x86).

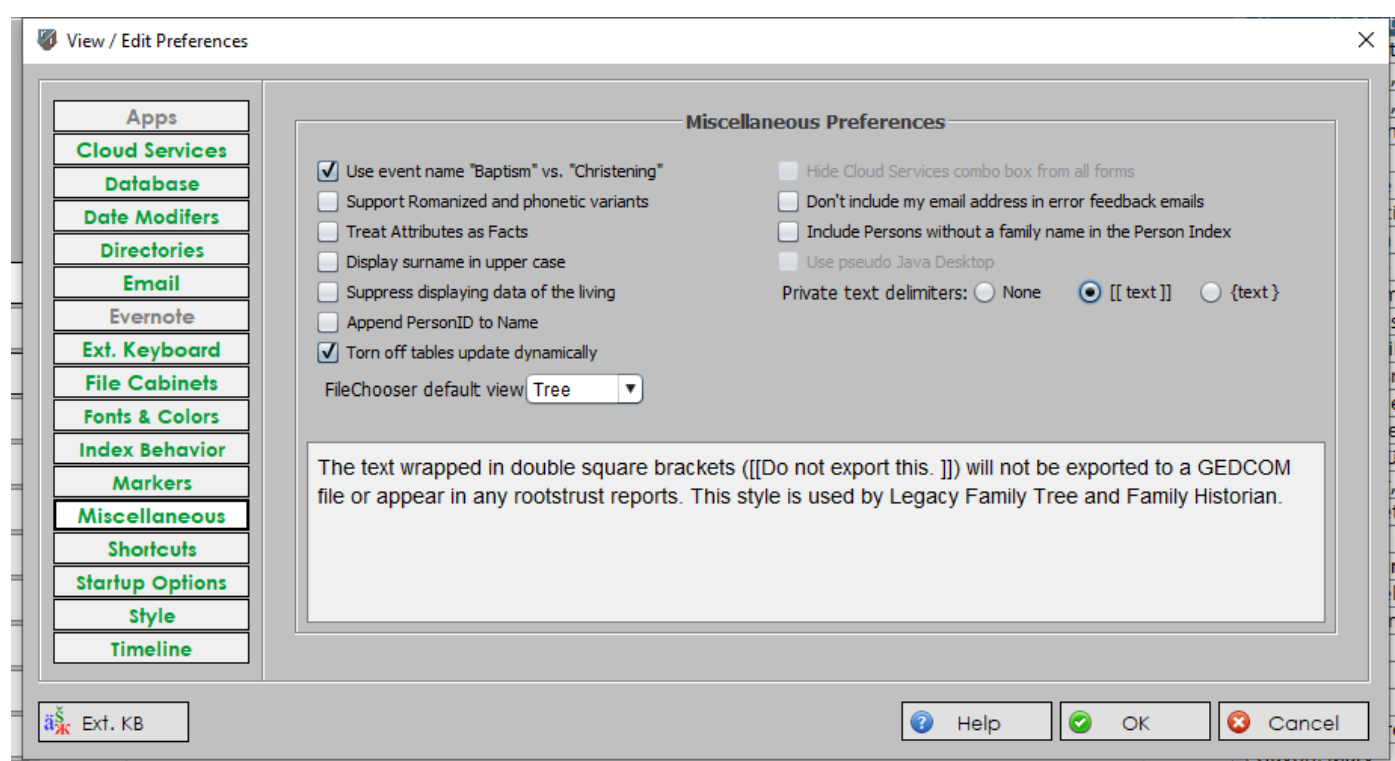
The installer also detects when a previously installed copy of rootstrust exists and will uninstall it at the user's request. Note that in the case of a non-admin user, the installer cannot uninstall a previous copy located in directories like X:\Program Files and X:\Program Files (x86) that are read only.

- \_FGRAVE.** GEDCOM files generated by Legacy Family Tree can contain a custom tag that identifies a Find a Grave memorial number. rootstrust now recognizes this tag.
- RIN.** An Automated Record ID (RIN) can appear in a GEDCOM file for an individual, family, source, repository, submission, submitter, note and image. Legacy Family Tree does not use the standard RIN tag to export these values. Instead then embed them with the cross-reference identifiers (XREF IDs) used to uniquely identify objects within the file. There is no GEDCOM tag for an XREF ID, since they are not intended to be imported. Legacy assigns a unique numeric code (RIN) to each object and uses
- Private text.** In Legacy Family Tree and Family Historian you can mark text as private by wrapping it in double brackets. RootsMagic uses single curly brackets for the same purpose. Private text does not get exported to a GEDCOM file or appear in a report. You can, however, opt to include private text in reports and GEDCOM files, in which case the delimiter characters will be stripped.

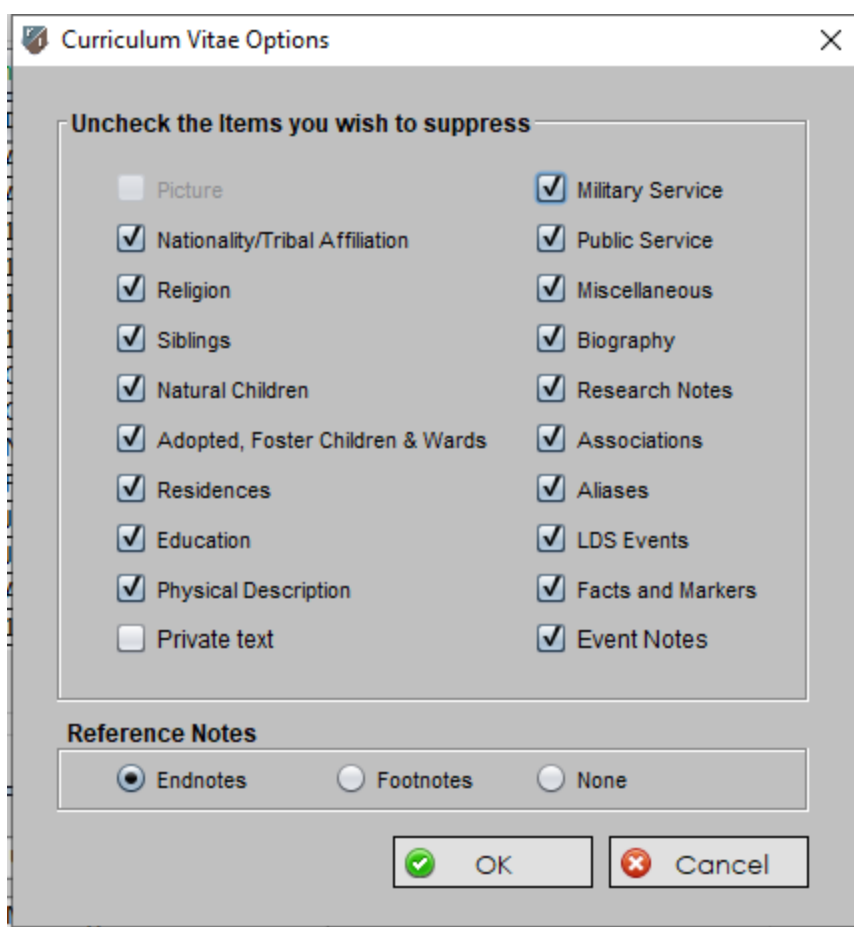
[[James served a two-year prison term for larceny. ]]      Legacy & Fam. Hist. style

{James served a two-year prison term for larceny. }      RootsMagic style

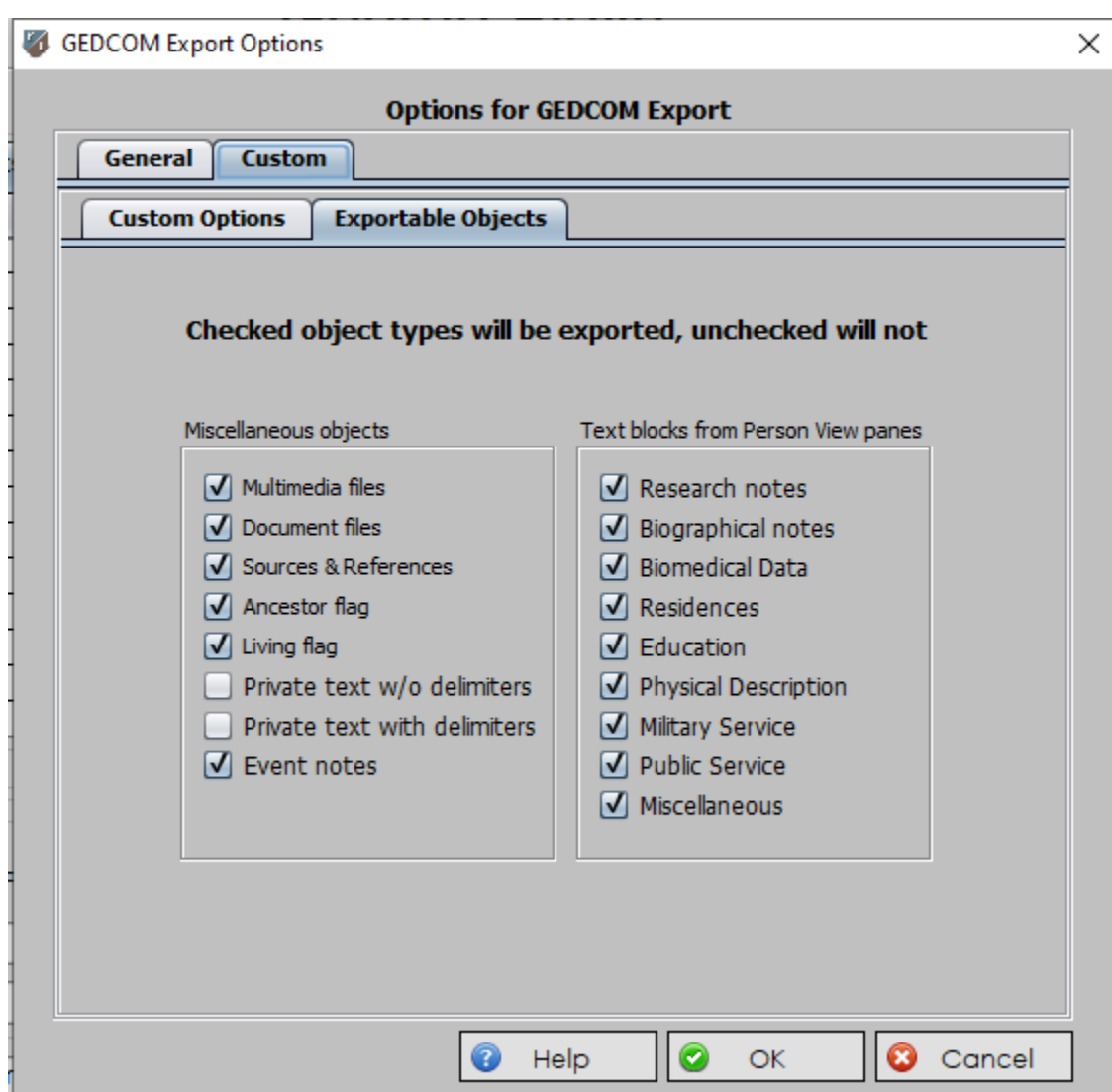
While rootstrust now recognizes both of these privacy styles, you must choose which of the two you wish to use for any given database. Make your selection on the Miscellaneous panel of the Preferences form, as seen below.



- New Report Options.** Event notes can now be optionally included in Narrative and Curriculum Vitae reports. Also, the suppression of private text can be overridden.



6. **New GEDCOM Export Options.** Event notes can now be optionally excluded from exported GEDCOM files, the suppression of private text can be overridden, and the data that resides on the various panes of the Person View can be included or excluded.



7. **References on Family Group Sheets.** The Reference field on the Family Group Sheet form is only wide enough to accommodate 15 characters. When designing this form, we did not intend for this field to be used for complete Source citations like those used on Narrative and Curriculum Vitae reports. Rather we envisioned the use of 'reference hints', so if the details of a birth come from a birth certificate, the hint would be "Birth cert." Some reference hints cannot be expressed so succinctly in which case we use the Short Name field of the Source along with the Location field of the Reference resulting in something like "Bergen, p. 127". If such a hint exceeded 15 characters, only the first 15 characters of the hint were stored in the Reference field of the form. Unfortunately, this sometimes resulted in meaningless reference hints. To overcome this shortcoming (no pun intended), we now append longer reference hints to the bottom of the page as footnotes.

8. **Search.** The 'Events by Place' search option has been broken down into two types:
- **Events by Specific Place.** Use this search type to find all Events that occurred in a specific location that corresponds to a Place object defined in your database. Simply select the Place from the alphabetically ordered table of Places. You can optionally narrow your search by using additional search criteria such as Venue, Event type, starting year and ending year. After entering your search criteria, click the *Search* button. The resultant table of Events is sorted alphabetically by the family names of the Persons to whom the Events belong.
  - **Events by General Place.** Use this search type to find all Events that occurred in any location that contains one of the expressions entered into the Place: field. The search compares these expressions with the *Short Name* and *Long Name* fields of each Place object in your database. If you enter 'hempstead' into the Place: field, any Place object whose *Short Name* or *Long Name* field contains '%hempstead%' will be selected. The '%' is a wild card character that represents zero or more text characters. If you were to enter

%New York% |%, NY | %N.Y. | %N. Y.

into the Place: field, any Place object that defines a location in New York State will be selected. The expression '%, NY' was used instead of '%NY' to prevent place names ending in 'ny' such as 'Germany' from being selected (the comparison is not case sensitive). You can use this also to group ethnically or historically different names for the same location such as:

- %New York% | %New Amsterdam% | %Nieuw Amsterdam%
- %Danzig% | %Gdańsk%
- %Liège% | %Luik% | %Luyk% | %Lüttich%
- %Venice% | %Venezia% | %Venedig%

After entering your search criteria, click the Search button. The resultant table of Events is sorted alphabetically by the family names of the Persons to whom the Events belong.

9. **Version Check.** The Help menu command 'Check for new version' has been removed, since it accesses rootstrust.com which will no longer exist after January 2021.
10. **Exception Reports.** Automatic exception reports have been sent via an email address at rootstrust.com. Since rootstrust.com will be going away rootstrust now sends exception reports via an email address that will be valid after rootstrust.com disappears.

## Corrected Program Errors.

11. **Delete or Uninstall database.** rootstrust has never permitted the user to delete or uninstall the database currently open, however a design oversight (which has now been corrected) allowed the default database to be deleted or uninstalled as long as it was not the current database. The next time rootstrust was invoked and attempted to open the default database, it was not there.
12. **Line of Descent.** Line of Descent reports are generated using Rich Text Format (RTF) which does not directly support text characters that are not on English language keyboards. They must be translated into escape codes. While this translation was occurring for male and female lines of descent, it was not happening for lines of descent from an arbitrarily selected Person.
13. **Venue Type.** The value selected from the Venue type combo box on the Venue View and Venue detail form was not being written to the database.
14. **Research Notes.** An attempt to add research notes to a Person that had no research notes resulted in the error "PRIMARY KEY must be unique". This error has been corrected.
15. **Alternate Database Directory.** Changing the database directory from the default location in rootsTrust.data to another folder resulted in a corrupted rootsTrust.properties file which then prevented rootstrust from starting the next time the user attempted to invoke it. This insidious bug has been eradicated.
16. **Add Person.** Sometimes adding a spouse or parent resulted in an error message being displayed that contained the text "PRIMARY KEY must be unique". This should no longer occur.
17. **Country combo box.** In earlier versions of rootstrust, the Country combo box found on the Place View and Place detail form was editable, i.e. if the drop-down list did not contain the name of the desired country, you could type it in. Sometime along the way, the editable attribute of that combo box was inadvertently removed making it impossible to add countries. The combo box is once again editable in this version.
18. **Images linked to Sources.** Document and multimedia image files subordinate to Sources in GEDCOM files were not being imported. This oversight has been corrected.
19. **Image description.** Image files described in a GEDCOM file can have a title attribute (TITL) which in rootstrust corresponds to the Image's Description field. In the absence of the TITL attribute, rootstrust will assign the file name less the file name extension to the Description field. Up until now, a bug prevented the TITL attribute from being recognized such that the Description field was always populated with the file name. That has been corrected.
20. **Space at end of file name.** We recently encountered bizarre behavior after importing a GEDCOM file. rootstrust did not open the newly created database and reported that the database did not exist. After a considerable amount of head scratching, we determined that the GEDCOM file had a space before the file name extension as in MyFamily .ged. rootstrust now looks for that situation and properly adjusts to it.
21. **Ownership.** The Documents and Multimedia panes of the Person View can contain file that are linked to the Person as well as the Person's Events. The right-click popup menu on those two panes contain an 'Ownership' command that will identify whether the selected file belongs to the Person or to an Event. The 'Ownership' command had stopped working but has been reinstated.
22. **Configuration Manager.** We recently changed the default install directory on Windows systems to C:\Program Files for users who have admin rights. Then we discovered that the rootstrust Configuration Manager was not able to execute, since admin privileges are required to manipulate files subordinate to C:\Program Files. The Configuration Manager now displays a more meaningful error message that instructs the user to run it in admin mode. That can be accomplished in one of two ways:
  - a. Right-click the Windows menu entry and select 'Run as administrator' from the popup menu. This method only grants you admin rights for one time.

- b. Right-click the Windows menu entry and select 'Properties' from the popup menu. Then from the Properties dialog box, click the 'Advanced...' button and click the 'Run as administrator' checkbox so that the checkmark is visible. Now, whenever you invoke the Configuration Manager, it will always be with admin rights.

23. **Event Roles.** Due to changes we made in some combo boxes a while back, Event Roles were not being properly set when you added an Event. If you add a confirmation Event, the Event Role is automatically set to 'Confirmand'. However, prior to this fix, the Event Role assigned to the Event was 'Other'.
24. **Missing Indices Tab.** If you were running rootstrust 2.0 with a 2019 license key and entered a 2020 license key to unlock the full Version 2.0 functionality, you likely experienced a crash. The reason for the crash is that the Indices tab had been removed from the Person View, since you didn't have a 2020 license when you invoked rootstrust. After entering the 2020 license key, rootstrust tried to display the Indices tab which was missing, causing the crash. rootstrust now restores the Indices tab in this situation.
25. **Person Index Glitch.** After creating a new database and changing the name of Person 'Empty database' to something meaningful, the Person Index was not being updated to reflect the change. Also, adding a spouse to a Person cause the Name field Person Index entry for the roots Person to be cleared and zero to be stored in the 'Death Date' field.
26. **Select Spouse.** If you are running with a 2019 license, the Select Spouse form that is displayed when adding a marriage Event was not displaying properly: only the title bar was showing.
27. **GEDCOM Import crash.** The GEDCOM import wizard has, in the past, not verified that the input file has a file name extension of .ged. Recently, a user attempted to import a rootstrust database file with a .rtdb file name extension as a GEDCOM file causing rootstrust to crash. rootstrust no longer allows that to occur.

The fix to the above-described error was so overzealous that it would accept no file for GEDCOM import. Build 401 corrects that problem.